

SysAidTM

Administrator Tools

Installation

SysAid Administrator Tools Installation

The most simple way to deploy the SysAid agent to your network is to use the SysAid Network Discovery tool, under **Asset Management**→ **Network Discovery**, as described in the **Complete SysAid User Manual**.

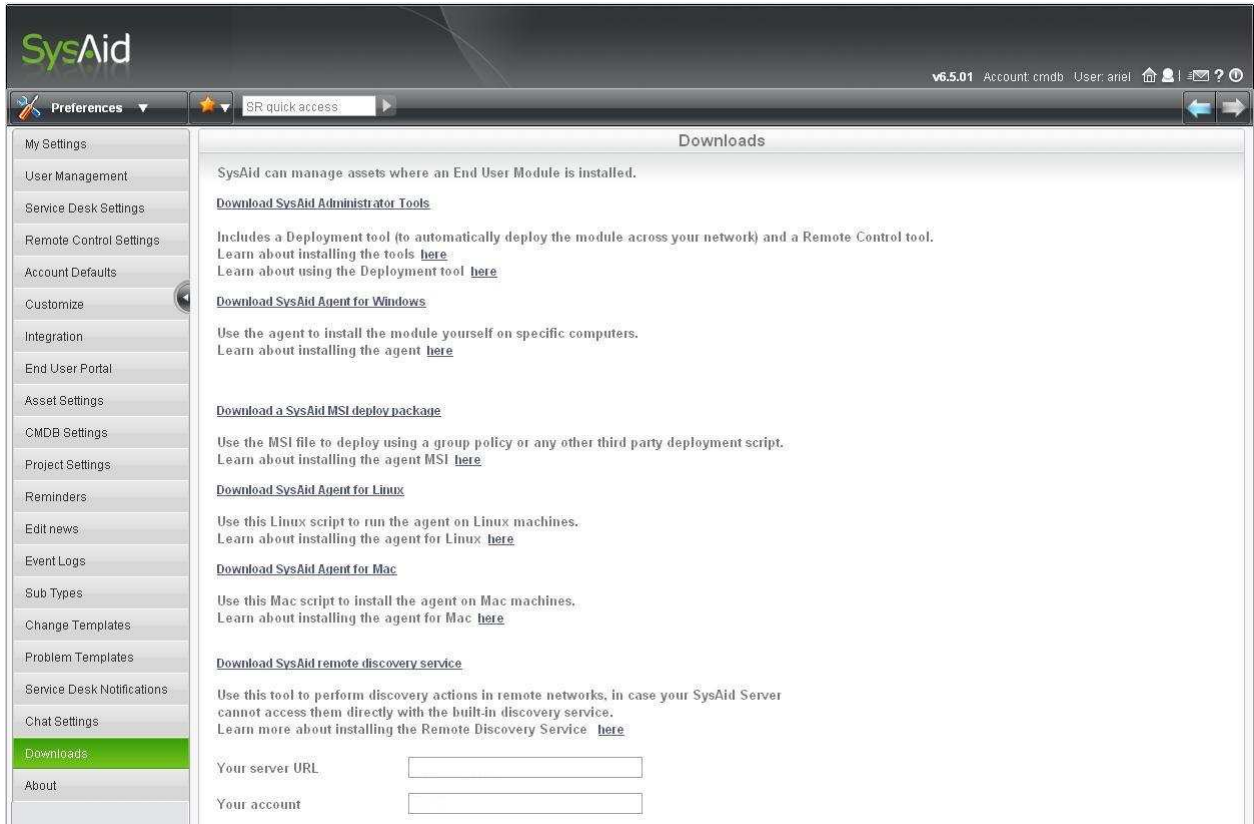
In addition, there are three other deployment options available:

- Install **Administrator Tools**, followed by deployment of the agent using the **External Deployment Tool**.
- Deploy the **SysAid Agent for Windows** with a login script or deploy the **SysAid Agent for Linux** using a script. In the most recent editions of SysAid you can also deploy SysAid agent for MSI and Mac. To learn more please visit the following web-pages: <http://www.ilient.com/msi.htm>
http://ilient.com/mac_agent.htm
- Finally you can manually deploy the SysAid agent.

This guide describes the first option, how to install the **Administrative Tools** externally. Once you have installed the **Administrative Tools** you will need to read **The Deployment Tool, Guide 5** describing how to install the SysAid agent.

After you have logged into SysAid, click on **Preferences**→ **Downloads** in the sidebar menu.

Figure 1: Downloads page



The **Downloads** page allows you to install **Administrator Tools** (a part of the administrative tools is the deployment tool), thereby automating deployment across your network.

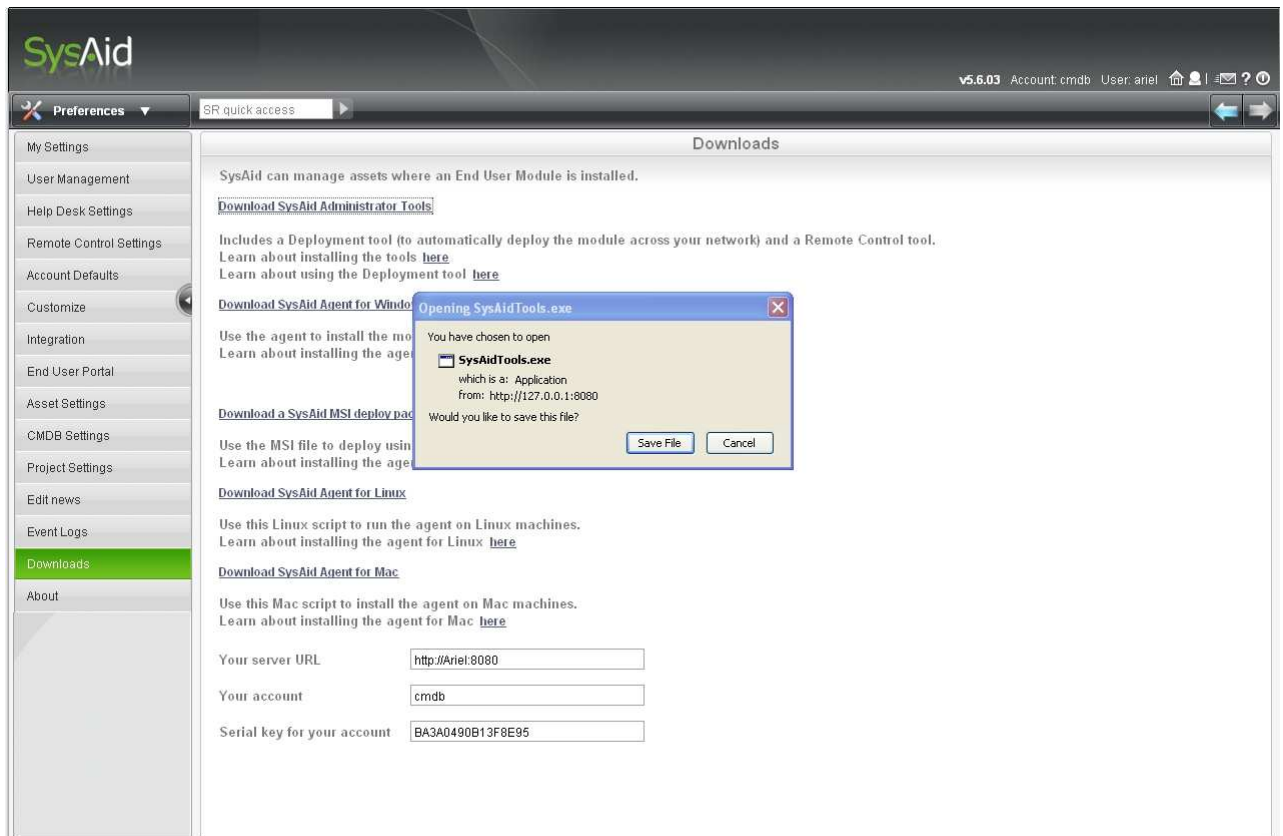
1. Click on **Download SysAid Administrative Tools** to commence installation of the SysAid Admin Tools with a Setup Wizard. (Applicable for Windows NT, Windows 2000, and Windows XP computers).

Following successful installation of the **Administrator Tools**, you will have access to the **Deployment Tool** and the **Administrative Remote Control Tool**.

Note: If this installation fails or is not applicable, e.g. your network has firewalls or anti-virus continue to try the other options detailed further in the **SysAid User Manual**.

2. You will be prompted to save the file.

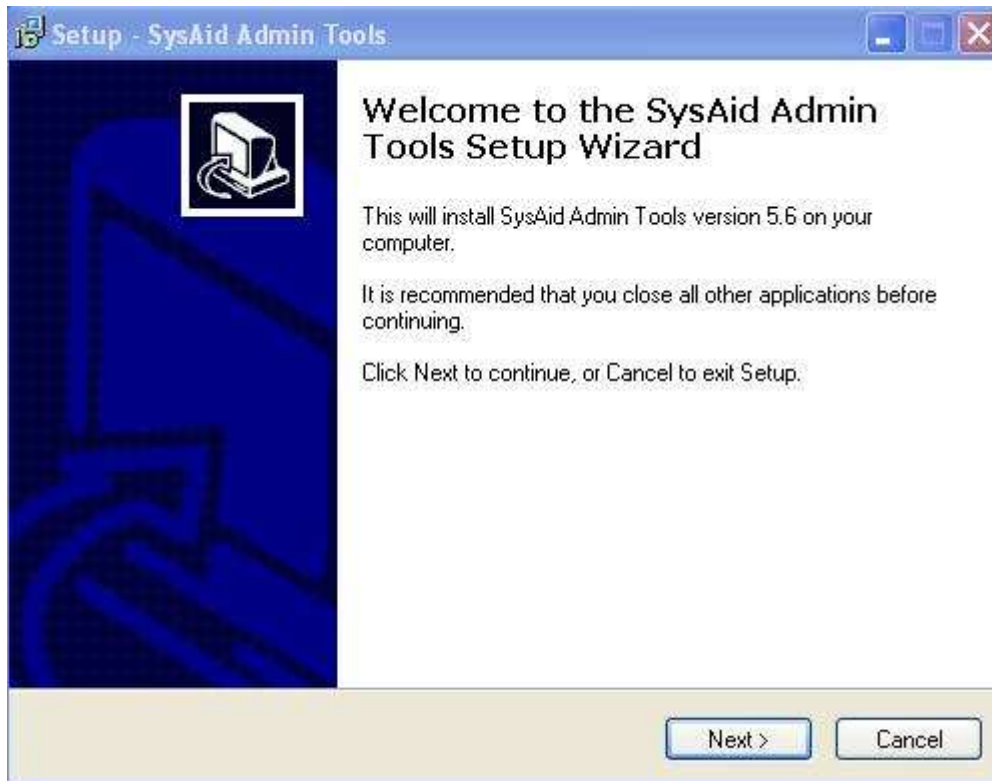
Figure 2: Commencing File Download



3. Save the file named **SysAidTools.exe** to your hard disk. Once **Download** is complete, click the **Run** button.

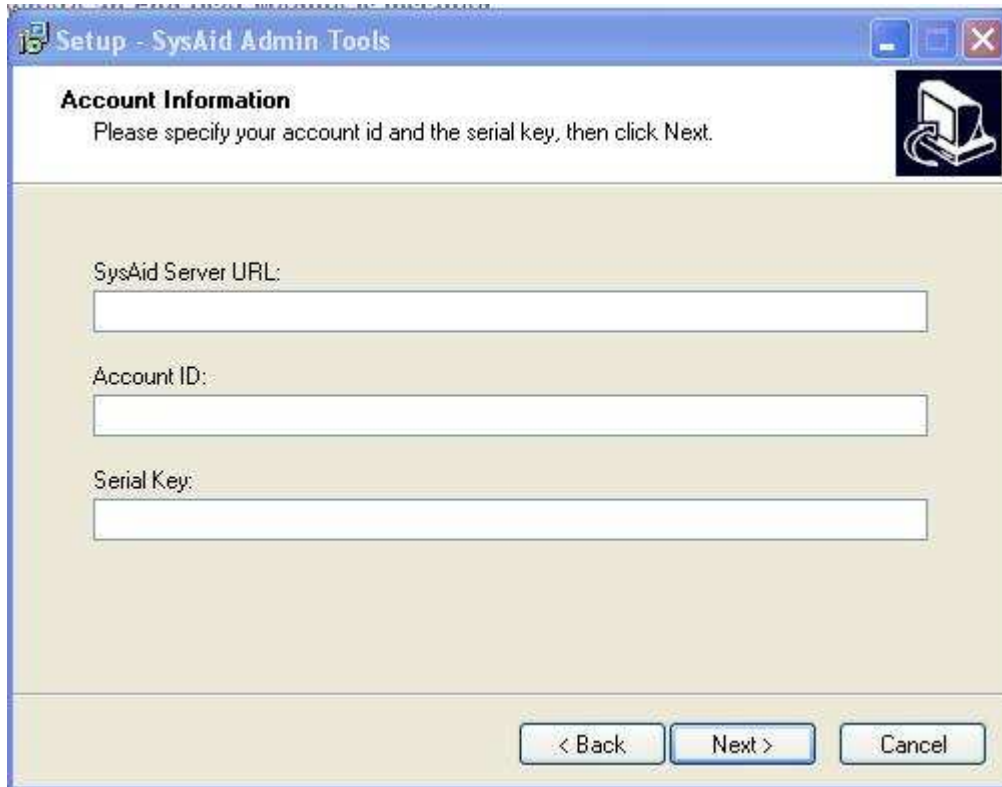
4. When you will execute this file you will enter the **Admin Tools Setup Wizard**.

Figure 3: Wizard Welcome Screen



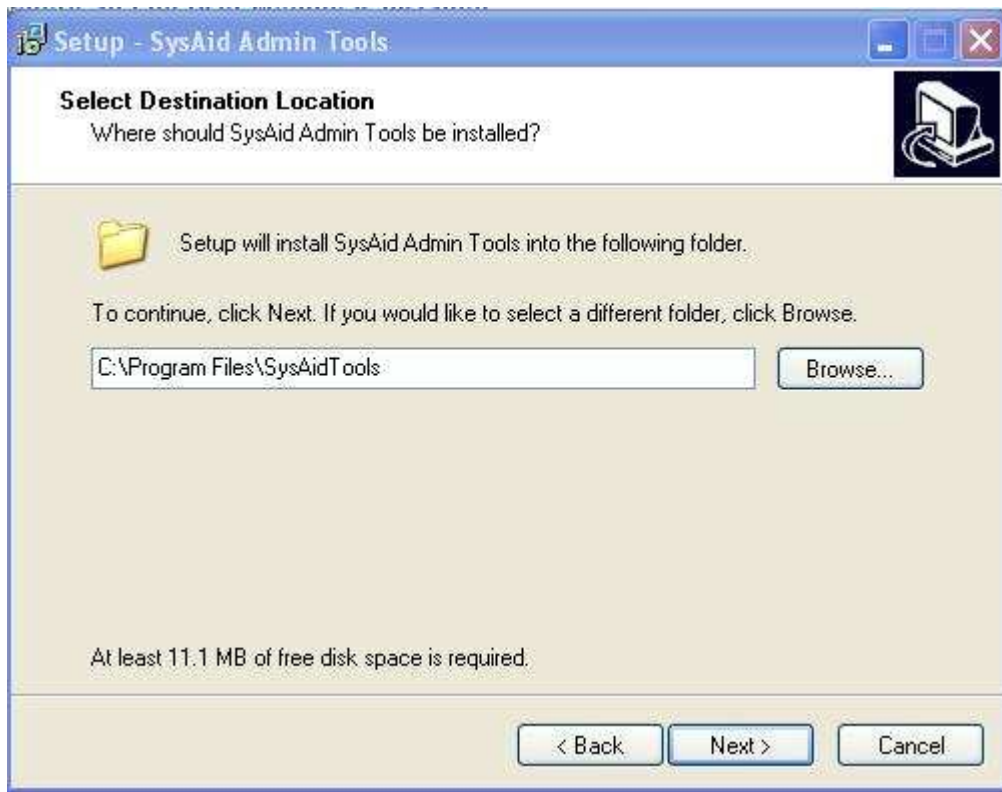
5. Click **Next**. The following screen requires you to input your account information.

Figure 4: Account Information



6. To correctly fill in the account information, go to the **Downloads** page of **SysAid** that you currently use. There you can copy and paste the account information into this page. Then click **Next**.

Figure 5: Set Up- Admin Tools



7. Click **Next** to have the SysAid Admin Tools installed in the above folder or select a different folder by clicking on the **Browse** button.

8. Set up will place a shortcut in the following Start menu folder. Click **Next** to continue or **Browse** to change to a different folder.

Figure 6: Select Start Menu Folder



9. The Ready to Install screen will appear, finally click Install to have the administrative tools installed.

10. To exit Set up click Finish.

Figure 7: Ready to install



Figure 8: Set up Wizard Complete



The administrator tools are now installed.

Click on **Start** → **Programs** → **SysAid** you will see two additional menu options: **Deploy Sys Aid** and **Sys Aid Remote Control Tool**.

Figure 9: Two additional menu options



The Deployment tool allows SysAid to see the assets on your network. To learn further about how to use and run the tool, see the **Deployment Tool Guide (Guide 5)**.