



SysAid™ Administrator Tools Installation

Guide 4

June 2006

Version 3.1.3



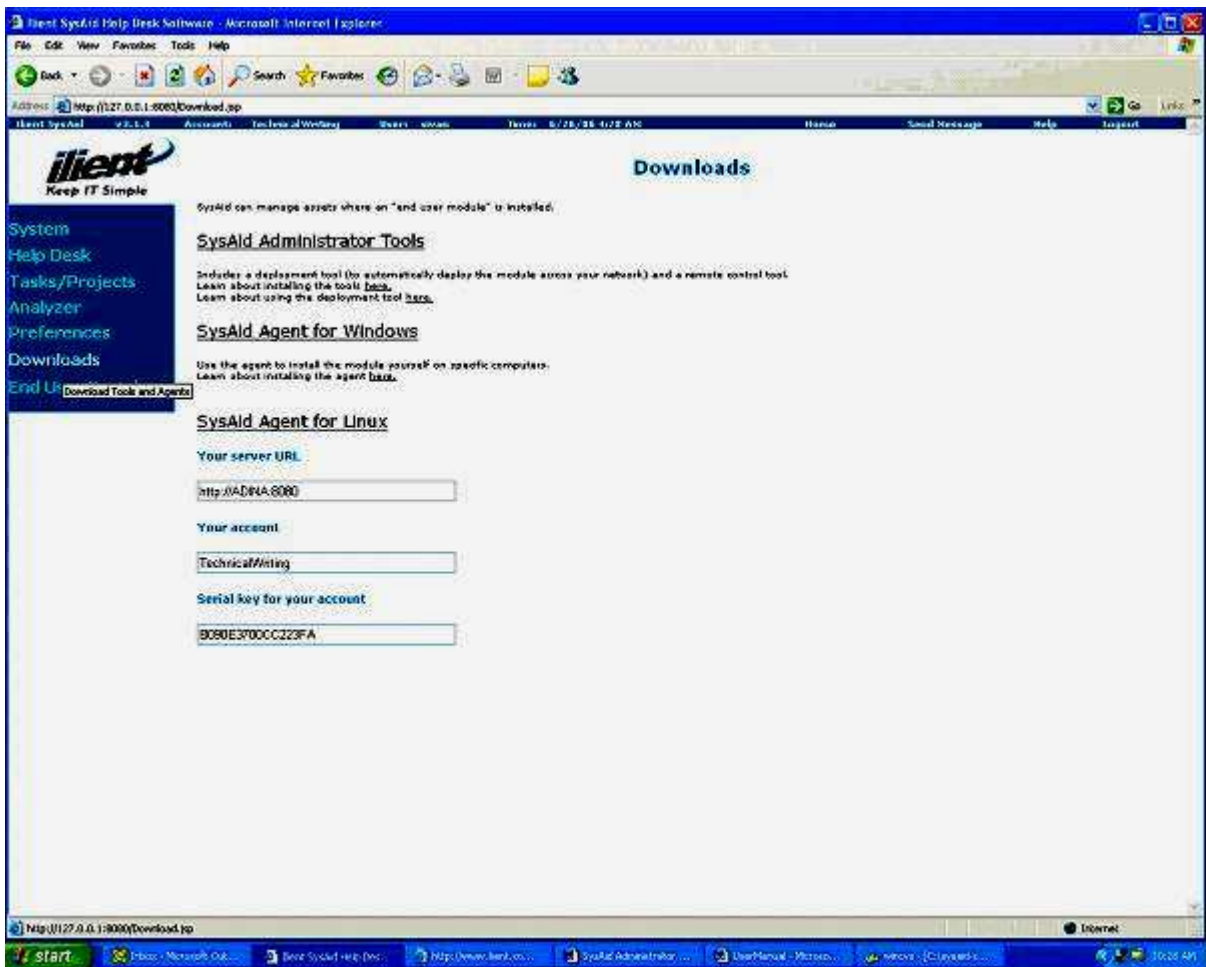
If you have purchased the **Asset Management Module** you should deploy the SysAid agent. How you do that is entirely up to you. There are three deployment options available:

- Install **Administrator Tools**, followed by deployment of the agent using the **Deployment Tool**.
- Deploy the **SysAid Agent for Windows** with a login script or deploy the **SysAid Agent for Linux** using a script.
- Finally you can manually deploy the SysAid agent.

This guide describes the first option, how to install the **Administrative Tools**. Once you have installed the **Administrative Tools** you will need to read **The Deployment Tool, Guide 5** describing how to install the SysAid agent.

After you have logged into SysAid, click on the **Downloads** in the sidebar menu.

Figure 1: Downloads page



The **Downloads** page allows you to install **Administrator Tools** (a part of the administrative tools is the deployment tool), thereby automating deployment across your network.

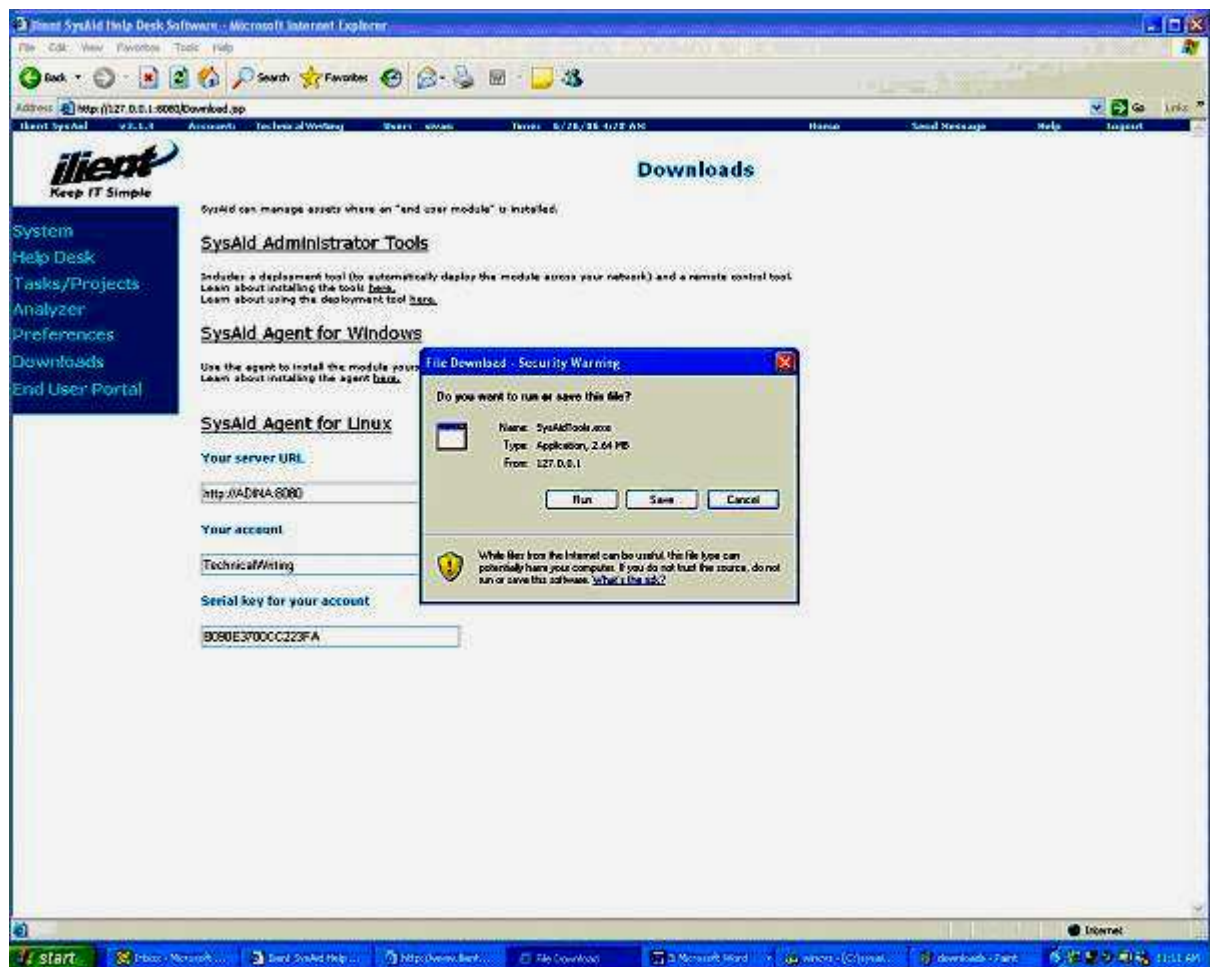
1. Click on **SysAid Administrative Tools** to commence installation of the SysAid Admin Tools with a Setup Wizard. (Applicable for Windows NT, Windows 2000, and Windows XP computers).

Following successful installation of the **Administrator Tools**, you will have access to the Deployment Tool and the Administrative Remote Control Tool.

Note: If this installation fails or is not applicable, e.g. your network has firewalls or anti-virus continue to try the other options detailed further in the **SysAid User Manual** (Chapter 5.2).

2. You will be prompted to save the file.

Figure 2: Commencing File Download



3. Save the file named **SysAidTools.exe** to your hard disk. Once **Download** is complete, click the **Run** button.

4. When you will execute this file you will enter the **Admin Tools Setup Wizard**.

Figure 3: Wizard Welcome Screen



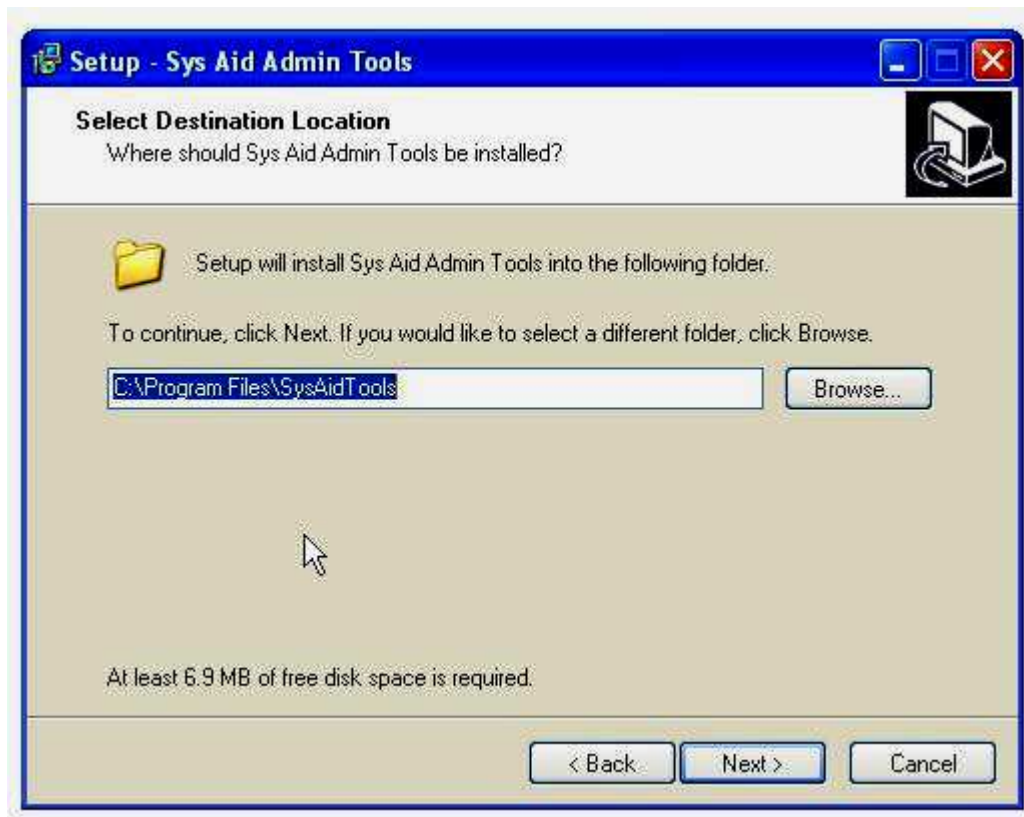
5. Click **Next**. The following screen requires you to input your account information.

Figure 4: Account Information

The screenshot shows a Windows-style dialog box titled "Setup - Sys Aid Admin Tools". The main heading is "Account Information" with a sub-instruction: "Please specify your account id and the serial key, then click Next:". There is a small icon of a computer monitor with a refresh symbol in the top right corner of the dialog. Below the instruction are three text input fields: "SysAid Server URL:", "Account ID:", and "Serial Key:". At the bottom of the dialog are three buttons: "< Back", "Next >", and "Cancel".

6. To correctly fill in the account information, go to the **Downloads** page of **SysAid** that you currently use there you can copy and paste the account information into this page. Then click **Next**.

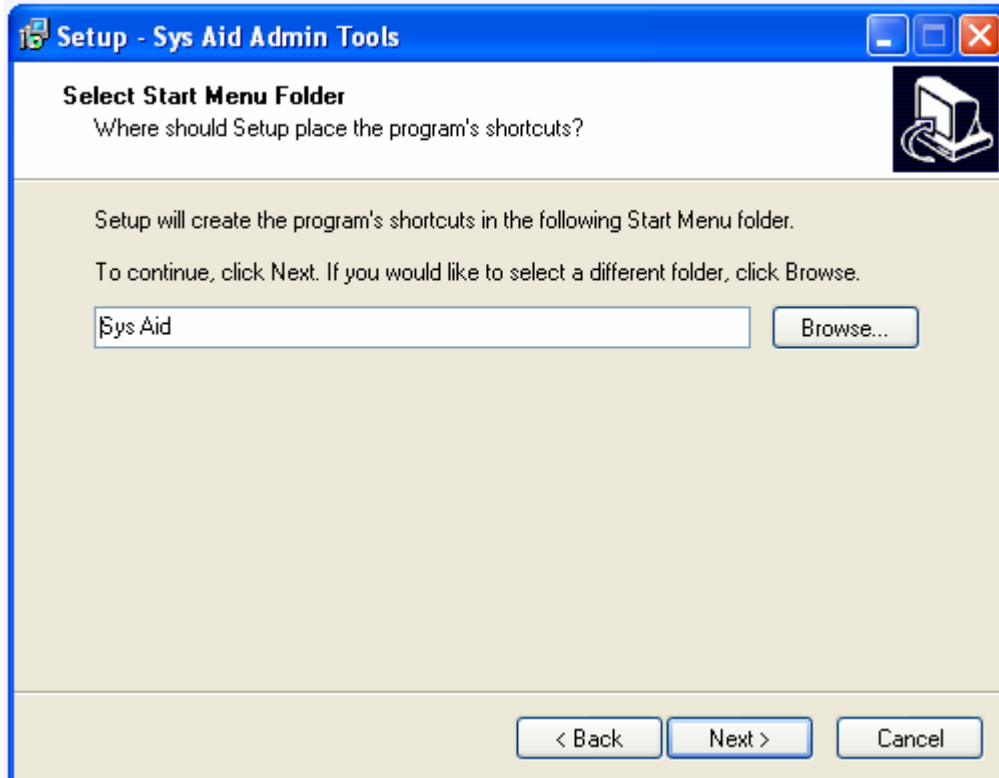
Figure 5: Set Up- Admin Tools



7. Click **Next** to have the SysAid Admin Tools installed in the above folder or select a different folder by clicking on the **Browse** button.

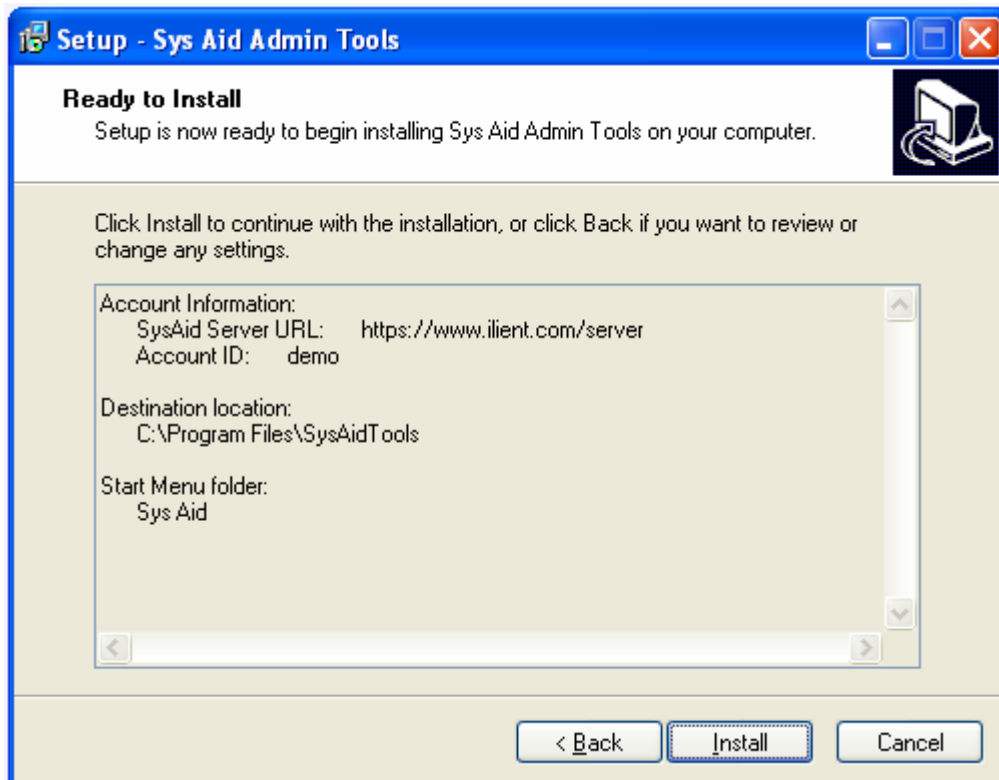
8. Set up will place a shortcut in the following Start menu folder. Click **Next** to continue or **Browse** to change to a different folder.

Figure 6: Select Start Menu Folder



9. The **Ready to Install** screen will appear, finally click **Install** to have the administrative tools installed.

Figure 7: Ready to install



10. To exit Set up click **Finish**.

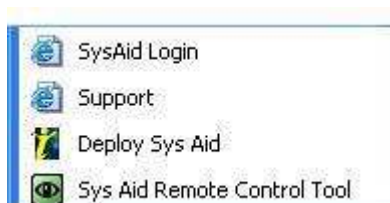
Figure 8: Set up Wizard Complete



The administrator tools are now installed.

Click on **Start > Programs > Sys Aid** you will see two additional menu options: **Deploy Sys Aid** and **Sys Aid Remote Control Tool**.

Figure 9: Two additional menu options





The Deployment tool allows SysAid to see the assets on your network. To learn further about how to use and run the tool, see the **Deployment Tool Guide (Guide 5)**.